



# J.K.K.MUNIRAJAH MEDICAL RESEARCH FOUNDATION'S ANNAI JKK SAMPOORANI AMMAL COLLEGE OF PHARMACY

Ethirmedu, **B.Komarapalayam** – 638 183, Namakkal Dist. Tamilnadu. India

Approved by : Pharmacy Council of India, New Delhi & The Tamilnadu Dr.M.G.R Medical University, Chennai.

Website : [www.jkkmmrfpharmacy.edu.in](http://www.jkkmmrfpharmacy.edu.in) |E-Mail : [principal@jkkmmrfpharmacy.edu.in](mailto:principal@jkkmmrfpharmacy.edu.in)

Contact No. : +919789456750, +919943069944, +919943066944

## 7.1.2 ALTERNATE SOURCES OF ENERGY AND ENERGY CONSERVATION MEASURES

Energy and environmental conservation are critical for long term viability. JKKMMRF's Annai JKK Sampoorani Ammal college of Pharmacy believes that environment and energy consumption policy may significantly contribute to environmental conservation via efficient energy use and so serve the cause of man and environment in a dedicated manner.

Various efforts have been taken by the college to utilize the solar energy in an effective way based on its unique infrastructure. First and foremost, the college infrastructure is designed to make maximum utilization of natural light by reducing the use of lights inside the classrooms and lab during the day time. Besides various measures are taken to reduce the power consumption in our campus. It mainly includes the provision of On-grind solar roof college top panel.

They can produce the average solar energy 5 kv plant and automatic solar Light. Biogas plant has been installed backside of the hostel.

In addition, LED and sensor based lights and Fan are used for saving electricity.

### 1. Solar

The use of conventional energy by JKKMMRF's has been partially replaced by renewable energy source. In 2022 JKKMMRF's erected a solar rooftop plant with a capacity of 5kV from which of the institute receives an unerupted power supply and has significantly reduced energy cost.



  
Dr. N. SENTHILKUMAR,  
PRINCIPAL,

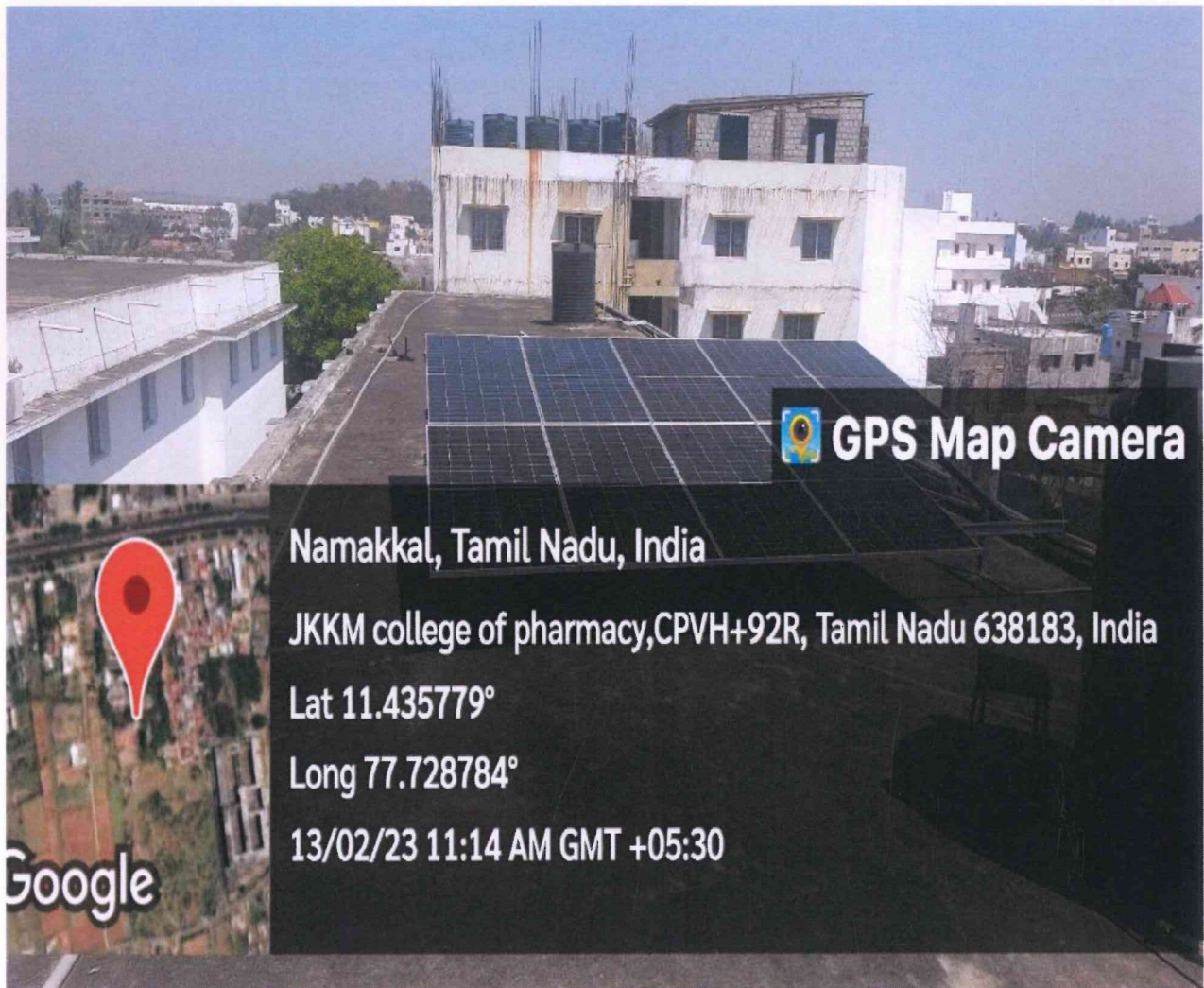
JKK MUNIRAJAH MEDICAL RESEARCH FOUNDATION  
ANNAI JKK SAMPOORANI AMMAL COLLEGE OF PHARMACY,  
ETHIRMEDU, KOMARAPALAYAM - 638 183,  
NAMAKKAL DISTRICT, TAMILNADU.



# J.K.K.MUNIRAJAH MEDICAL RESEARCH FOUNDATION'S ANNAI JKK SAMPOORANI AMMAL COLLEGE OF PHARMACY

Ethirmedu, **B.Komarapalayam** – 638 183, Namakkal Dist. Tamilnadu. India  
Approved by : Pharmacy Council of India, New Delhi & The Tamilnadu Dr.M.G.R Medical University, Chennai.  
Website : [www.jkkmmrfpharmacy.edu.in](http://www.jkkmmrfpharmacy.edu.in) |E-Mail : [principal@jkkmmrfpharmacy.edu.in](mailto:principal@jkkmmrfpharmacy.edu.in)  
Contact No. : +919789456750, +919943069944, +919943066944

It can support these loads continuously at night since it is paired with hybrid inverters and also includes charge controllers to control batteries.



**Solar Rooftop Plant**



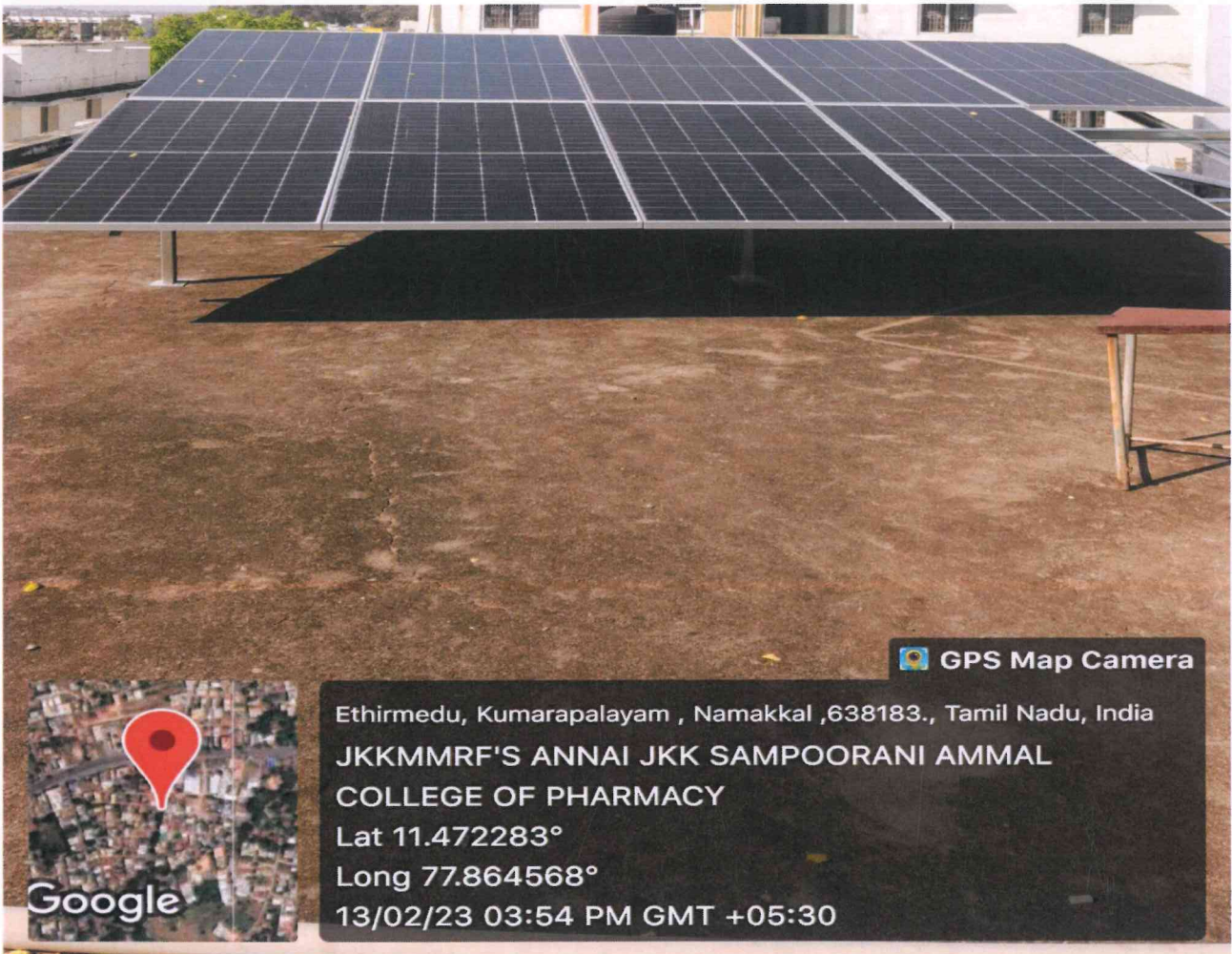
  
**Dr. N. SENTHILKUMAR,**  
**PRINCIPAL,**

**JKK MUNIRAJAH MEDICAL RESEARCH FOUNDATION  
ANNAI JKK SAMPOORANI AMMAL COLLEGE OF PHARMACY,  
ETHIRMEDU, KOMARAPALAYAM - 638 183.  
NAMAKKAL DISTRICT, TAMILNADU.**



# J.K.K.MUNIRAJAH MEDICAL RESEARCH FOUNDATION'S ANNAI JKK SAMPOORANI AMMAL COLLEGE OF PHARMACY

Ethirmedi, **B.Komarapalayam** – 638 183, Namakkal Dist. Tamilnadu. India  
Approved by : Pharmacy Council of India, New Delhi & The Tamilnadu Dr.M.G.R Medical University, Chennai.  
Website : [www.jkkmmrfpharmacy.edu.in](http://www.jkkmmrfpharmacy.edu.in) |E-Mail : [principal@jkkmmrfpharmacy.edu.in](mailto:principal@jkkmmrfpharmacy.edu.in)  
Contact No. : +919789456750, +919943069944, +919943066944



GPS Map Camera



Ethirmedi, Kumarapalayam , Namakkal ,638183., Tamil Nadu, India  
JKKMMRF'S ANNAI JKK SAMPOORANI AMMAL  
COLLEGE OF PHARMACY  
Lat 11.472283°  
Long 77.864568°  
13/02/23 03:54 PM GMT +05:30

## Solar Rooftop Plant



  
Dr. N. SENTHILKUMAR,  
PRINCIPAL,

JKK MUNIRAJAH MEDICAL RESEARCH FOUNDATION  
ANNAI JKK SAMPOORANI AMMAL COLLEGE OF PHARMACY,  
ETHIRMEDU, KOMARAPALAYAM - 638 183.  
NAMAKKAL DISTRICT, TAMILNADU.



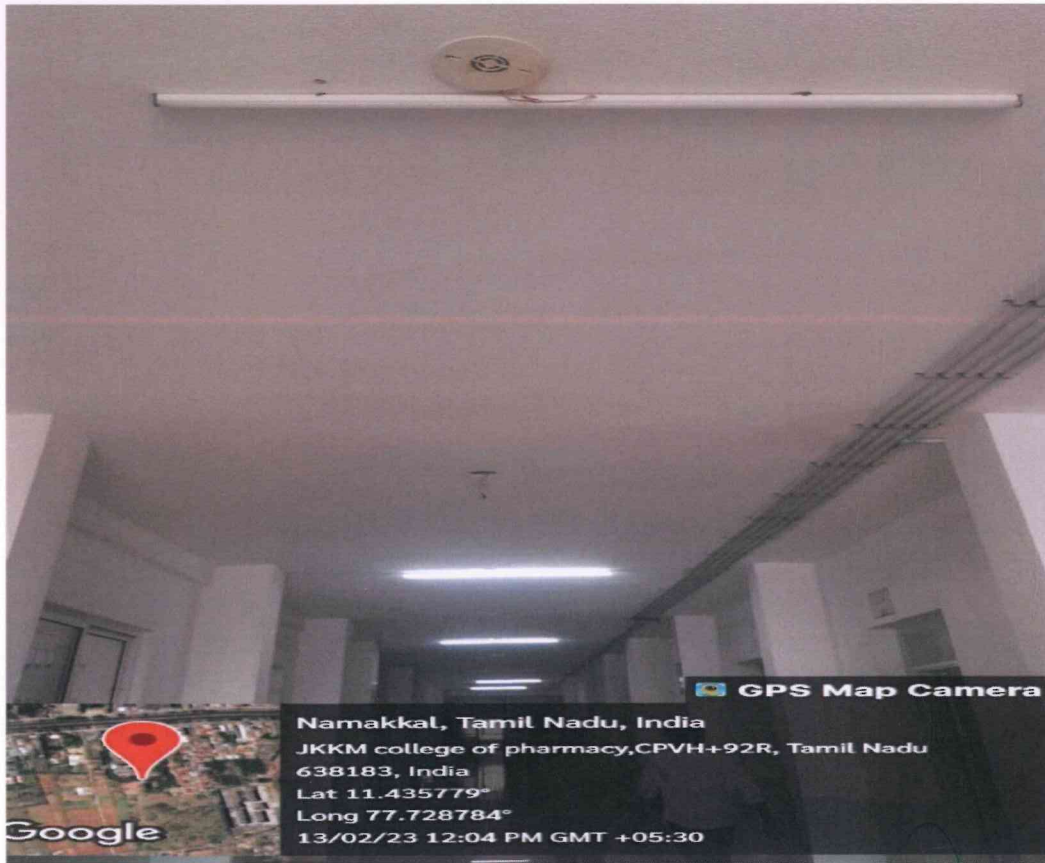
# J.K.K.MUNIRAJAH MEDICAL RESEARCH FOUNDATION'S ANNAI JKK SAMPOORANI AMMAL COLLEGE OF PHARMACY

Ethirmedi, **B.Komarapalayam** – 638 183, Namakkal Dist. Tamilnadu. India  
Approved by : Pharmacy Council of India, New Delhi & The Tamilnadu Dr.M.G.R Medical University, Chennai.  
Website : [www.jkkmmrfpharmacy.edu.in](http://www.jkkmmrfpharmacy.edu.in) | E-Mail : [principal@jkkmmrfpharmacy.edu.in](mailto:principal@jkkmmrfpharmacy.edu.in)  
Contact No. : +919789456750, +919943069944, +919943066944

## 2.LED LIGHTS FOR ENERGY EFFICIENCY

Light emitting diode (LED) lights provide many benefits for homes and business such as energy efficiency and improve overall light quality. LEDs consume less energy than any other type of lights available on the market.

One of the important merits of LED lights in classroom to improved academic performance of student and also improved reading speed and concentration.



Led Lights in First Floor Corridor

*Dr. N. Senthilkumar*  
Dr. N. SENTHILKUMAR,  
PRINCIPAL,

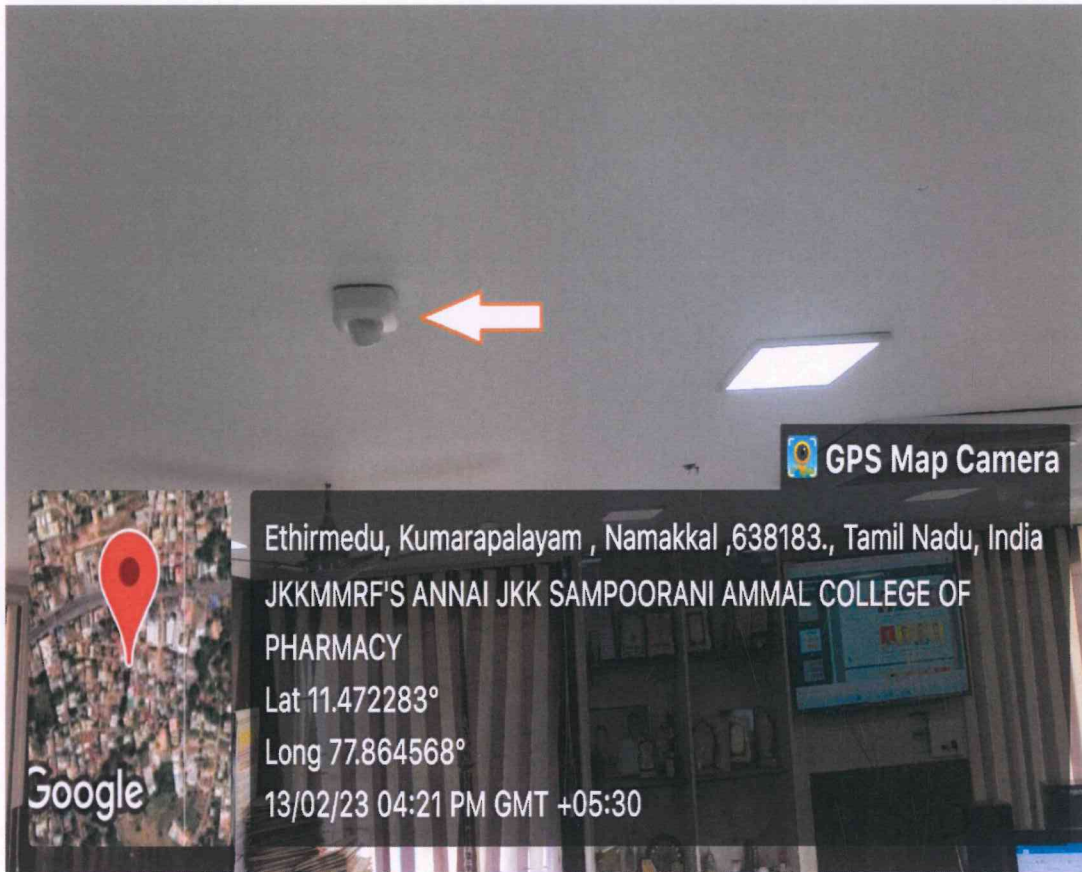
JKK MUNIRAJAH MEDICAL RESEARCH FOUNDATION  
ANNAI JKK SAMPOORANI AMMAL COLLEGE OF PHARMACY,  
ETHIRMEDU, KOMARAPALAYAM - 638 183.  
NAMAKKAL DISTRICT, TAMILNADU.





# J.K.K.MUNIRAJAH MEDICAL RESEARCH FOUNDATION'S ANNAI JKK SAMPOORANI AMMAL COLLEGE OF PHARMACY

Ethirmedu, **B.Komarapalayam** – 638 183, Namakkal Dist. Tamilnadu. India  
Approved by : Pharmacy Council of India, New Delhi & The Tamilnadu Dr.M.G.R Medical University, Chennai.  
Website : [www.jkkmmrfpharmacy.edu.in](http://www.jkkmmrfpharmacy.edu.in) |E-Mail : [principal@jkkmmrfpharmacy.edu.in](mailto:principal@jkkmmrfpharmacy.edu.in)  
Contact No. : +919789456750, +919943069944, +919943066944



**Sensor lights provide benefits for energy saving.**



  
**Dr. N. SENTHILKUMAR,**  
PRINCIPAL,  
JKK MUNIRAJAH MEDICAL RESEARCH FOUNDATION  
ANNAI JKK SAMPOORANI AMMAL COLLEGE OF PHARMACY,  
ETHIRMEDU, KOMARAPALAYAM - 638 183,  
NAMAKKAL DISTRICT, TAMILNADU.




# J.K.K.MUNIRAJAH MEDICAL RESEARCH FOUNDATION'S ANNAI JKK SAMPOORANI AMMAL COLLEGE OF PHARMACY

Ethirmedu, **B.Komarapalayam** – 638 183, Namakkal Dist. Tamilnadu. India  
Approved by : Pharmacy Council of India, New Delhi & The Tamilnadu Dr.M.G.R Medical University, Chennai.  
Website : [www.jkmmrfpharmacy.edu.in](http://www.jkmmrfpharmacy.edu.in) |E-Mail : [principal@jkmmrfpharmacy.edu.in](mailto:principal@jkmmrfpharmacy.edu.in)  
Contact No. : +919789456750, +919943069944, +919943066944



**Sensor fans provide benefits for energy saving.**



  
Dr. N. SENTHILKUMAR,  
PRINCIPAL,

JKK MUNIRAJAH MEDICAL RESEARCH FOUNDATION  
ANNAI JKK SAMPOORANI AMMAL COLLEGE OF PHARMACY,  
ETHIRMEDU, KOMARAPALAYAM - 638 183.  
NAMAKKAL DISTRICT, TAMILNADU.



# J.K.K.MUNIRAJAH MEDICAL RESEARCH FOUNDATION'S ANNAI JKK SAMPOORANI AMMAL COLLEGE OF PHARMACY

Ethirmedu, **B.Komarapalayam** – 638 183, Namakkal Dist. Tamilnadu. India  
Approved by : Pharmacy Council of India, New Delhi & The Tamilnadu Dr.M.G.R Medical University, Chennai.  
Website : [www.jkkmmrfpharmacy.edu.in](http://www.jkkmmrfpharmacy.edu.in) |E-Mail : [principal@jkkmmrfpharmacy.edu.in](mailto:principal@jkkmmrfpharmacy.edu.in)  
Contact No. : +919789456750, +919943069944, +919943066944

## 4.Biogas

Biogas plant available at JKKMMRF's with the goal of solid and liquid waste, food scraps, vegetables and fruits produced from canteen and hostel, Every day it is collected and fed to the biogas unit.

This renewable energy source is preferred for its capability to safeguard the environment.



**Biogas Plant in Hostel**



  
**Dr. N. SENTHILKUMAR,**  
PRINCIPAL,

JKK MUNIRAJAH MEDICAL RESEARCH FOUNDATION  
ANNAI JKK SAMPOORANI AMMAL COLLEGE OF PHARMACY,  
ETHIRMEDU, KOMARAPALAYAM - 638 183,  
NAMAKKAL DISTRICT, TAMILNADU.

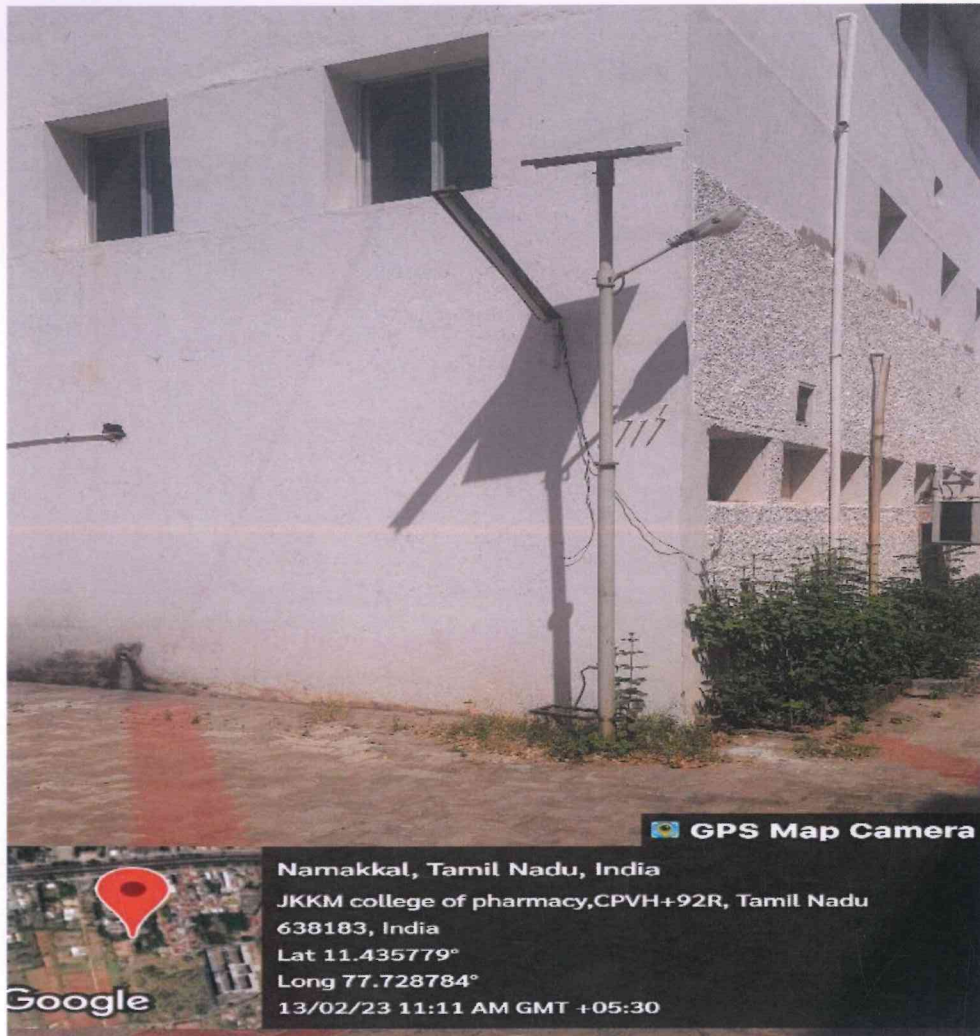


# J.K.K.MUNIRAJAH MEDICAL RESEARCH FOUNDATION'S ANNAI JKK SAMPOORANI AMMAL COLLEGE OF PHARMACY

Ethirmedu, **B.Komarapalayam** – 638 183, Namakkal Dist. Tamilnadu. India  
Approved by : Pharmacy Council of India, New Delhi & The Tamilnadu Dr.M.G.R Medical University, Chennai.  
Website : [www.jkkmmrfpharmacy.edu.in](http://www.jkkmmrfpharmacy.edu.in) |E-Mail : [principal@jkkmmrfpharmacy.edu.in](mailto:principal@jkkmmrfpharmacy.edu.in)  
Contact No. : +919789456750, +919943069944, +919943066944

## 5. Automatic solar Light

The project of automatic street light system is a cost effective, practical, eco-friendly and the safest save energy. This system has implemented Infront of ladies' hostel automatically power on the light at night time and power off the day time.



Automatic solar Street Light



*Dr. N. Senthilkumar*  
**Dr. N. SENTHILKUMAR,**  
**PRINCIPAL,**  
JKK MUNIRAJAH MEDICAL RESEARCH FOUNDATION  
ANNAI JKK SAMPOORANI AMMAL COLLEGE OF PHARMACY  
ETHIRMEDU, KOMARAPALAYAM - 638 183.  
NAMAKKAL DISTRICT, TAMILNADU.