

**BROCHURE- PROGRAM OUTCOMES- MAPPING AND JUSTIFICATION**



**JKKMMRF'S ANNAI JKK SAMPOORANI AMMAL  
COLLEGE OF PHARMACY, KOMARAPALAYAM.**

**YOU ARE INVITED TO  
INTERNAL QUALITY ASSURANCE CELL (IQAC) CONDUCTED  
QUALITY BASED SEMINAR ON**

**PROGRAM OUTCOMES- MAPPING AND JUSTIFICATION**

**Date: 23 MARCH 2022**

**VENUE: SEMINAR HALL**

**RESOURCE PERSON: Dr. P. BALAN,  
Professor and Head,  
Department of Pharmaceutical Chemistry,  
The Erode College of Pharmacy,  
Veppampalayam, Erode [Dist.],  
Tamil Nadu, PIN:638112.**



**Dr. N. SENTHILKUMAR,  
PRINCIPAL,**

**JKK MUNIRAJAH MEDICAL RESEARCH FOUNDATION  
ANNAI JKK SAMPOORANI AMMAL COLLEGE OF PHARMACY,  
ETHIRMEDU, KOMARAPALAYAM - 638 183.  
NAMAKKAL DISTRICT, TAMILNADU.**



# J.K.K.MUNIRAJAH MEDICAL RESEARCH FOUNDATION'S ANNAI JKK SAMPOORANI AMMAL COLLEGE OF PHARMACY

Ethirmedu, B.Komarapalayam – 638 183, Namakkal Dist. Tamilnadu, India  
Approved by : Pharmacy Council of India, New Delhi & The Tamilnadu Dr.M.G.R Medical University, Chennai.  
Website : [www.jkkmmrfpharmacy.edu.in](http://www.jkkmmrfpharmacy.edu.in) |E-Mail : [principal@jkkmmrfpharmacy.edu.in](mailto:principal@jkkmmrfpharmacy.edu.in)  
Contact No. : +919789456750, +919943069944, +919943066944

**COLLABORATIVE INSTITUTION: THE ERODE COLLEGE OF PHARMACY**

**SEMINAR TITLE : PROGRAM OUTCOMES- MAPPING AND JUSTIFICATION**

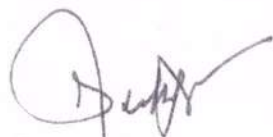
**RESOURCE PERSON: Dr. P. BALAN,**  
Professor and Head,  
Department of Pharmaceutical Chemistry,  
The Erode College of Pharmacy,  
Veppampalayam, Erode [Dist],  
Tamil Nadu, PIN:638112.

Resource person delivers about PO's



Students and staffs listening the seminar



  
Dr. N. SENTHILKUMAR,  
PRINCIPAL,

JKK MUNIRAJAH MEDICAL RESEARCH FOUNDATION  
ANNAI JKK SAMPOORANI AMMAL COLLEGE OF PHARMACY,  
ETHIRMEDU, KOMARAPALAYAM - 638 183,  
NAMAKKAL DISTRICT, TAMILNADU.

  
Dr. N. SENTHILKUMAR,  
PRINCIPAL,

JKK MUNIRAJAH MEDICAL RESEARCH FOUNDATION  
ANNAI JKK SAMPOORANI AMMAL COLLEGE OF PHARMACY,  
ETHIRMEDU, KOMARAPALAYAM - 638 183,  
NAMAKKAL DISTRICT, TAMILNADU.

**BROCHURE- COURSE OUTCOMES – MAPPING AND JUSTIFICATION**



**JKKMMRF'S ANNAI JKK SAMPOORANI AMMAL  
COLLEGE OF PHARMACY, KOMARAPALAYAM.**

**YOU ARE INVITED TO**

**INTERNAL QUALITY ASSURANCE CELL (IQAC) CONDUCTED**

**QUALITY BASED SEMINAR ON**

**Course outcomes-Mapping and Justification**

**Date: 22 FEBRUARY 2022**

**VENUE: SEMINAR HALL**

**RESOURCE PERSON: DR. T. PRABHA,**

**Professor and Head, Department of Pharmaceutical Analysis,**

**Nandha College of Pharmacy,**

**Koorapalayam, Erode [Dist.],**

**Tamil Nadu, PIN:638052.**



**Dr. N. SENTHILKUMAR,  
PRINCIPAL,**

**JKK MUNIRAJAH MEDICAL RESEARCH FOUNDATION  
ANNAI JKK SAMPOORANI AMMAL COLLEGE OF PHARMACY,  
ETHIRMEDU, KOMARAPALAYAM - 638 183,  
NAMAKKAL DISTRICT, TAMILNADU,**



# J.K.K.MUNIRAJAH MEDICAL RESEARCH FOUNDATION'S ANNAL JKK SAMPOORANI AMMAL COLLEGE OF PHARMACY

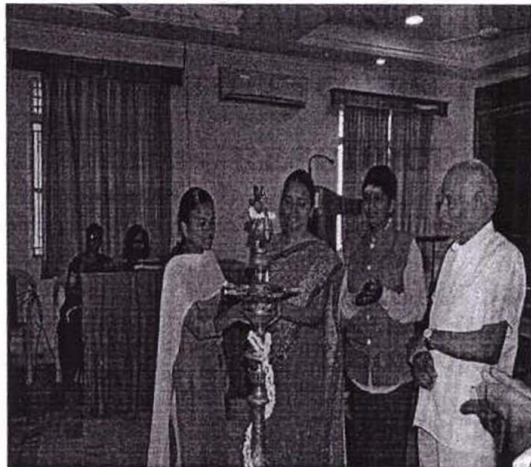
Ethirmedi, B.Komarapalayam – 638 183, Namakkal Dist. Tamilnadu. India  
Approved by : Pharmacy Council of India, New Delhi & The Tamilnadu Dr.M.G.R Medical University, Chennai.  
Website : [www.jkkmmrfpharmacy.edu.in](http://www.jkkmmrfpharmacy.edu.in) |E-Mail : [principal@jkkmmrfpharmacy.edu.in](mailto:principal@jkkmmrfpharmacy.edu.in)  
Contact No. : +919789456750, +919943069944, +919943066944

**COLLABORATIVE INSTITUTION: THE ERODE COLLEGE OF PHARMACY**

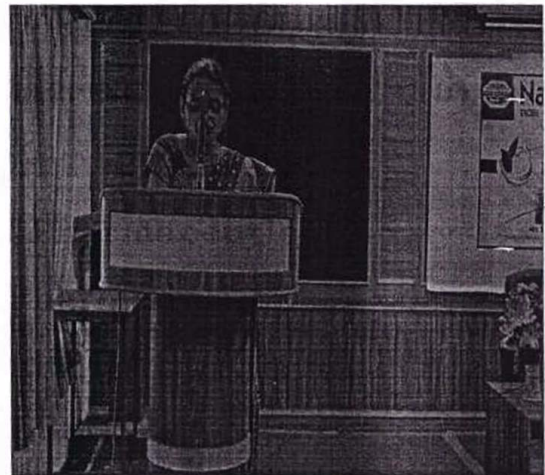
**SEMINAR TITLE : COURSE OUTCOMES-MAPPING AND JUSTIFICATION**

**RESOURCE PERSON: Dr. T. PRABHA,**  
**Professor and Head, Department of Pharmaceutical Analysis,**  
**Nandha College of Pharmacy,**  
**Koorapalayam, Erode [Dist.],**  
**Tamil Nadu, PIN:638052.**

Resource person lightening the  
lamp in Inaguration



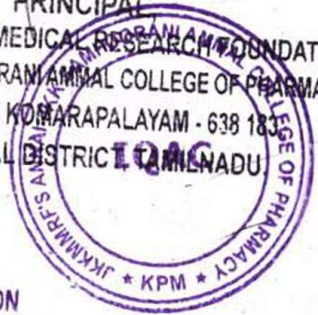
Resource person delivers about CO's



*[Handwritten Signature]*

**Dr. N. SENTHILKUMAR,**  
**PRINCIPAL**

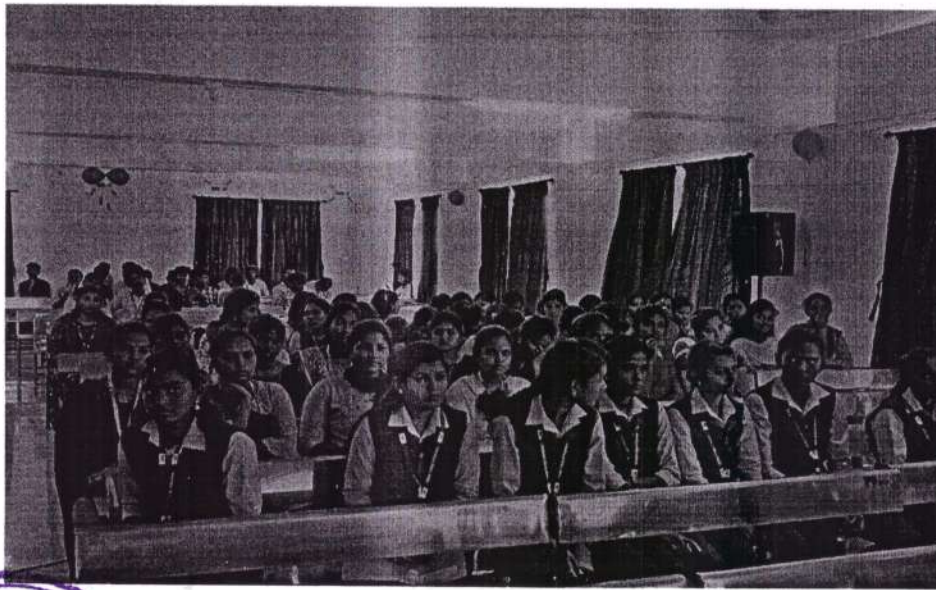
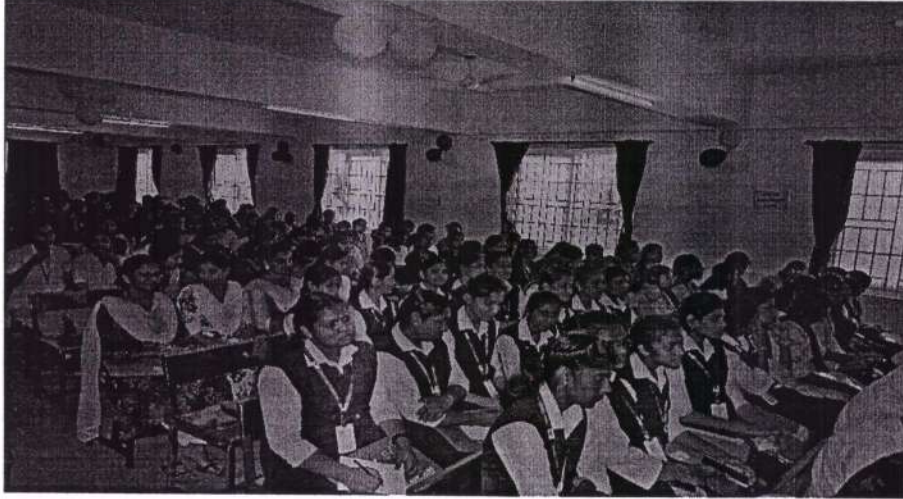
**JKK MUNIRAJAH MEDICAL RESEARCH FOUNDATION**  
**ANNAL JKK SAMPOORANI AMMAL COLLEGE OF PHARMACY,**  
**ETHIRMEDU, KOMARAPALAYAM - 638 183,**  
**NAMAKKAL DISTRICT, TAMILNADU**



*[Handwritten Signature]*  
**Dr. N. SENTHILKUMAR,**  
**PRINCIPAL**

**JKK MUNIRAJAH MEDICAL RESEARCH FOUNDATION**  
**ANNAL JKK SAMPOORANI AMMAL COLLEGE OF PHARMACY,**  
**ETHIRMEDU; KOMARAPALAYAM - 638 183.**  
**NAMAKKAL DISTRICT, TAMILNADU.**

Students and staffs listening the seminar



Dr. N. SENTHILKUMAR,  
PRINCIPAL,

JKK MUNIRAJAH MEDICAL RESEARCH FOUNDATION  
ANNAI JKK SAMPOORANI AMMAL COLLEGE OF PHARMACY,  
ETHIRMEDU, KOMARAPALAYAM - 638 183.  
NAMAKKAL DISTRICT, TAMILNADU.

Dr. N. SENTHILKUMAR,  
PRINCIPAL,

JKK MUNIRAJAH MEDICAL RESEARCH FOUNDATION  
ANNAI JKK SAMPOORANI AMMAL COLLEGE OF PHARMACY,  
ETHIRMEDU, KOMARAPALAYAM - 638 183.  
NAMAKKAL DISTRICT, TAMILNADU.